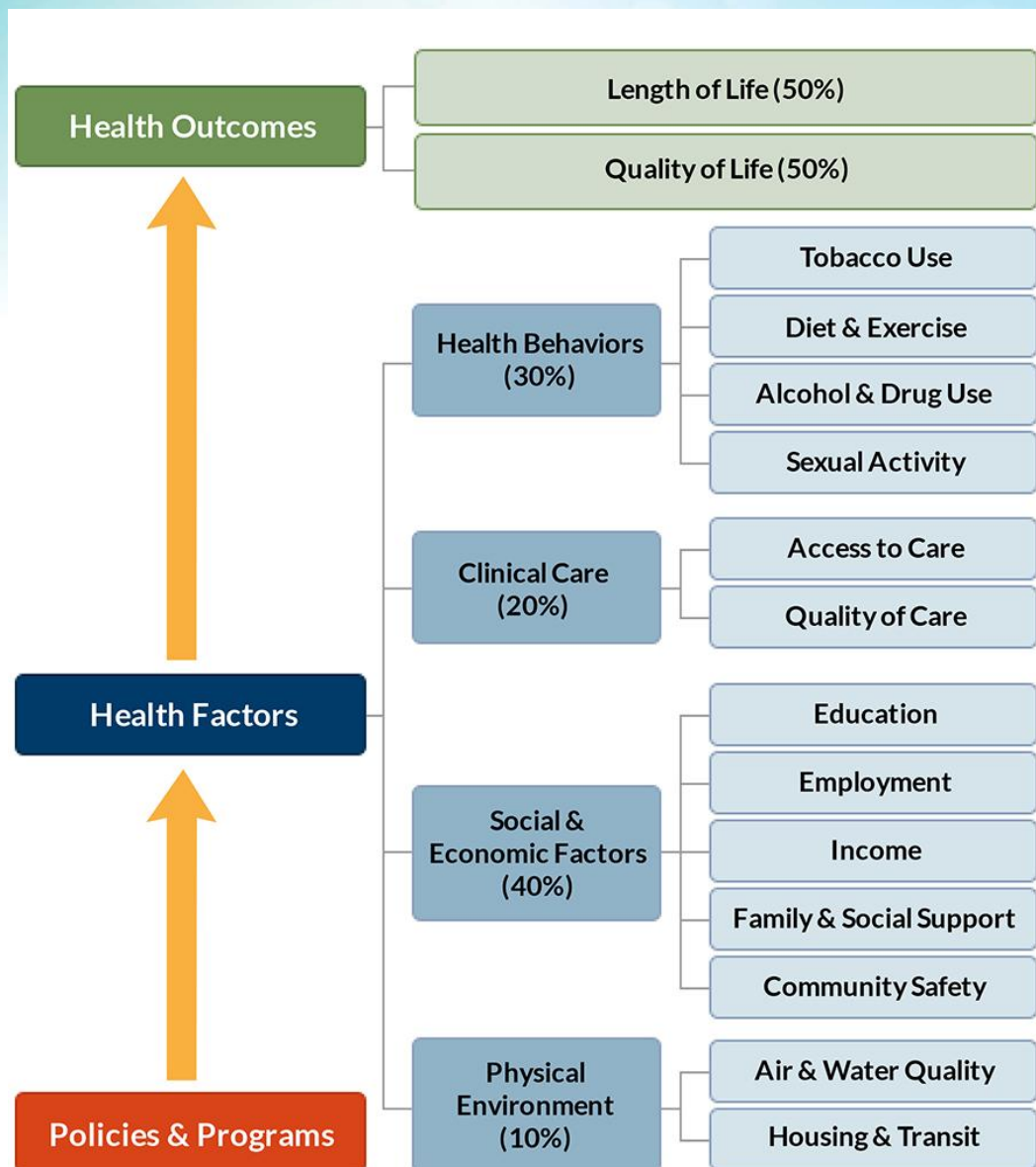


# County Health Rankings Model



## County Health Rankings & Roadmaps

Building a Culture of Health, County by County

A Robert Wood Johnson Foundation program

# County Health Rankings Model



## Genesee (GE)

	Genesee County 2013	Genesee County 2014	Genesee County 2015	Michigan	Top U.S. Performers*	Rank (of 82) 2013	Rank (of 82) 2014	Rank (of 82) 2015
<b>Health Outcomes</b>						<b>80</b>	<b>81</b>	<b>81</b>
<b>Length of Life</b>						<b>79</b>	<b>79</b>	<b>78</b>
Premature death	9,009	9,009	9,092	7,218	5,200			
<b>Quality of Life</b>						<b>81</b>	<b>81</b>	<b>81</b>
Poor or fair health	18%	19%	19%	14%	10%			
Poor physical health days	4.2	4.3	4.3	3.6	2.5			
Poor mental health days	4.1	4.2	4.2	3.7	2.3			
Low birthweight	10.20%	10.20%	10.3%	8.4%	5.9%			

# County Health Rankings Model



## Genesee (GE)

	Genesee County 2013	Genesee County 2014	Genesee County 2015	Michigan	Top U.S. Performers*	Rank (of 82) 2013	Rank (of 82) 2014	Rank (of 82) 2015
<b>Health Factors</b>						75	72	76
<b>Health Behaviors</b>						77	77	77
Adult smoking	23%	23%	23%	20%	14%			
Adult obesity	36%	36%	37%	32%	25%			
Food environment index	na	6.8	6.5	7.2	8.4			
Physical inactivity	30%	30%	27%	23%	20%			
Access to exercise opportunities	na	80%	83%	83%	92%			
Excessive drinking	16%	16%	16%	18%	10%			
Alcohol-impaired driving deaths	na	33%	28%	31%	14%			
Motor vehicle crash death rate	13	na	na					
Sexually transmitted infections	666	751	756	481	138			
Teen births	46	45	44	31	20			
<b>Clinical Care</b>						18	16	22
Uninsured	12%	12%	12%	13%	11%			
Primary care physicians	1,093:1	1,088:1	1,076:1	1,246:1	1,045:1			
Dentists	1,759:1	1,601:1	1,500:1	1,485:1	1,377:1			
Mental health providers	na	655:1	462:1	487:1	386:1			
Preventable hospital stays	65	63	64	65	41			
Diabetic monitoring	86%	86%	85%	86%	90%			
Mammography screening	70%	70%	69.5%	65.6%	70.7%			

# County Health Rankings Model



## Genesee (GE)

	Genesee County 2013	Genesee County 2014	Genesee County 2015	Michigan	Top U.S. Performers*	Rank (of 82) 2013	Rank (of 82) 2014	Rank (of 82) 2015
<b>Social &amp; Economic Factors</b>						<b>73</b>	<b>73</b>	<b>78</b>
High school graduation	72%	72%	70%	78%				
Some college	62%	62%	62.7%	65.6%	71.0%			
Unemployment	10.90%	9.50%	9.7%	8.8%	4.0%			
Children in poverty	31%	32%	33%	24%	13%			
Income inequality	na	na	4.8	4.7	3.7			
Inadequate social support	24%	24%	na					
Children in single-parent households	41%	42%	44%	34%	20%			
Social associations	na	na	9.8	10.2	22.0			
Violent crime	783	809	854	464	59			
Injury deaths	74	67	74	60	50			
<b>Physical Environment</b>						<b>76</b>	<b>78</b>	<b>75</b>
Air pollution - particulate matter	10.8	12.2	12.2	11.5	9.5			
Drinking water violations	0%	0%	0%	1%	0%			
Severe housing problems	na	18%	19%	17%	9%			
Driving alone to work	85%	85%	85%	83%	71%			
Long commute - driving alone	na	30%	30%	32%	15%			
Access to recreational facilities	7	na	na					
Limited access to healthy foods	9%	na	na					
Fast food restaurants	56%	na	na					

\* 90th percentile, i.e., only 10% are better.

Note: Blank values reflect unreliable or missing data